

COVID-19 and Concurrent Hazard Preparedness: The View from Sonoma County



California Resiliency Alliance

July 2020

Discussion Points

Challenges

Solution Areas

Deliverables

But first ...

www.socoemdocs.net



An aerial photograph of a vast vineyard in Sonoma County, California. The rows of grapevines are meticulously planted in neat, parallel lines that follow the contours of rolling hills. The vines are a vibrant green, and the soil between the rows is a dark, rich brown. The perspective is from a high angle, looking down on the landscape, which emphasizes the geometric patterns created by the agricultural layout. The lighting is bright, suggesting a clear day, and the overall scene conveys a sense of organized, large-scale agriculture.

Sonoma County, CA

SF Bay Area / Wine Country

1,600 sq mi

500,000 population

Agriculture, Tourism

2017

January: Flood

October: **Nuns-Tubbs Wildfires**



2017

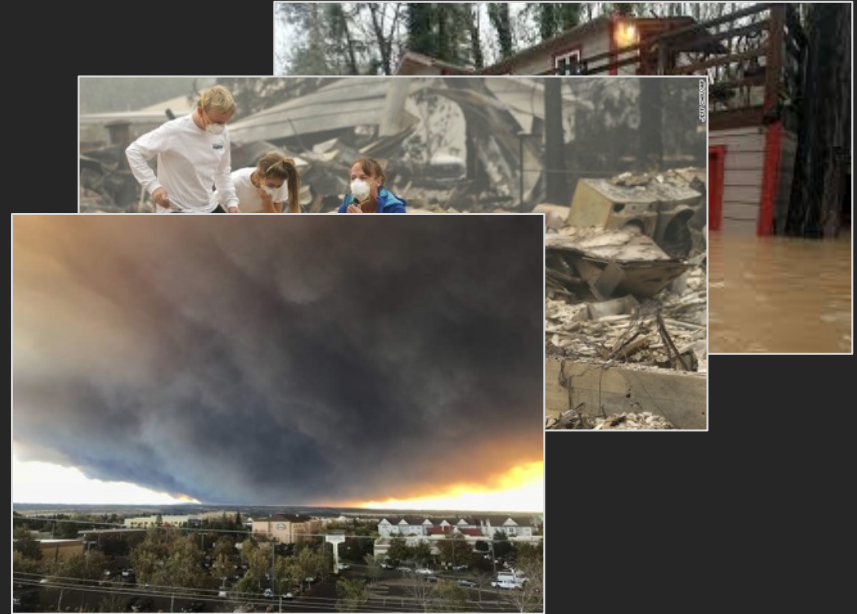
January: Flood

October: **Nuns-Tubbs Wildfires**

2018

All year: Fire Recovery

November: Smoke



2017

January: Flood

October: **Nuns-Tubbs Wildfires**

2018

All year: Fire Recovery

November: Smoke

2019

February: Flood

June – Oct: Power Shutoffs

October: **Kincadee Wildfire**



2017

January: Flood

October: **Nuns-Tubbs Wildfires**



2018

All year: Fire Recovery

November: Smoke



2019

February: Flood

June – Oct: Power Shutoffs

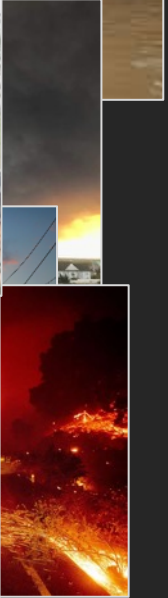
October: **Kincadee Wildfire**



2020

January: Homeless Encampment

March+ : COVID-19



Challenges





The 'Big Five':

1. Degraded organizational capabilities
2. Disrupted social fabric
3. Disrupted supply chains
4. Competing response missions
5. Compounding effects

Solution Areas





- Amend plans and resources
- Incorporate recent lessons learned
- Assess current COVID response
- Really engage stakeholders
- Rest and reset staff

Key Deliverables





Pandemic Concurrent Hazard Annex

Amends existing plans:

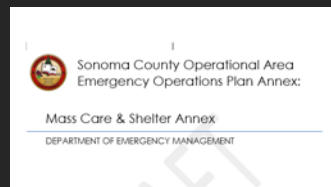
- Alert & Warning
- Evacuation
- Mass Care & Shelter
- EOC





Care & Shelter Tools

- New C&S Annex
- Shelter Handbook (w/ COVID)
- New shelter options
 - Non-Congregate Sheltering (NCS)
- Temporary Evacuation Points (TEPs)
- Screening kits and shelter trailers





Emergency Operations Center (EOC) Readiness

- WebEOC – virtual operations
- Reset layout for distancing
- Targeted training
- Staff coaching





Staff Duty Officer Enhancements

- Deploy to field Incident Command Posts (ICPs)
- Activate 2nd SDO
- Train and drill, train and drill





Public Information and Education

- Acknowledge community fatigue
- Expanded community outreach
- Continued Latinx engagement
- Expanded media and marketing
- Website enhancements

SoCo Emergency Prepare Emergency Recover Stay Informed

Información acerca del nuevo coronavirus

May 15, 2020 9:43 AM

Centro de coronavirus en el Condado de Sonoma a simple vista

Categoría de personas	Total	Activo	Recuperado	Muerto	Traslado
Casos acumulados de casos	209	127	148	4	6,639
Casos en las últimas 24 horas	0	0	0	+1	+182

El condado de Sonoma responde al coronavirus

El Condado de Sonoma ha declarado una emergencia local para responder al COVID-19, ampliamente conocido como coronavirus, en nuestra comunidad.

Medios asociados: Nuestra Oficina de Operaciones de Emergencia y servicios trabajando estrechamente con socios locales, estatales y federales para proteger la salud pública y detener la propagación de este virus.

2-1-1 del condado de Sonoma. Contáctenos. Contáctenos.

El condado de Sonoma ofrece apoyo emocional y apoyo comunitario a través de su línea de ayuda 2-1-1. El condado de Sonoma ofrece apoyo emocional y apoyo comunitario a través de su línea de ayuda 2-1-1.

El condado de Sonoma ofrece apoyo emocional y apoyo comunitario a través de su línea de ayuda 2-1-1.

El condado de Sonoma ofrece apoyo emocional y apoyo comunitario a través de su línea de ayuda 2-1-1.

WARM LINE FOR EMOTIONAL & MENTAL HEALTH SUPPORT

The last few months have been very difficult for everyone in our community. You may be feeling stressed, isolated, depressed, and anxious. You do not need to suffer alone - help is available.

Please call the Sonoma County Warm Line for Emotional and Mental Health Support:

(707) 565-2652

Or visit SoCoEmergency.org

This free and private warm line is available seven days a week from 10 a.m. - 7 p.m. Telephone interpretation for other languages is available.

Thank You!

Christopher Godley, CEM

Director of Emergency Management

County of Sonoma

christopher.godley@Sonoma-county.org

707-565-1152

www.socoemergency.org

www.socoemdocs.net





DEPARTMENT OF

**EMERGENCY
MANAGEMENT**

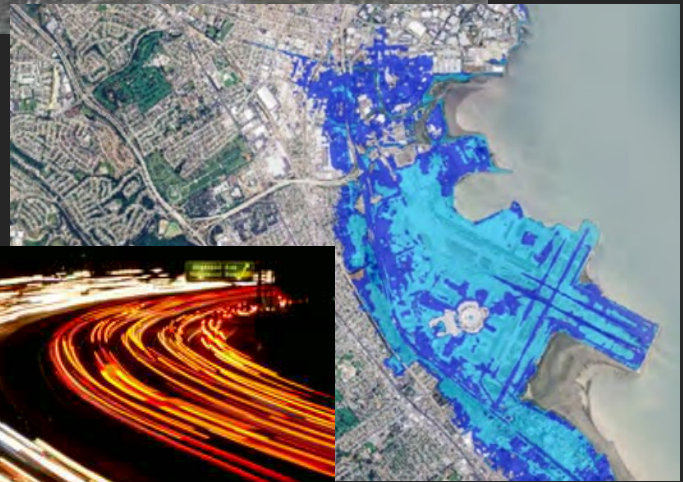
SONOMA COUNTY





PHOTO: WIKIMEDIA COMMONS

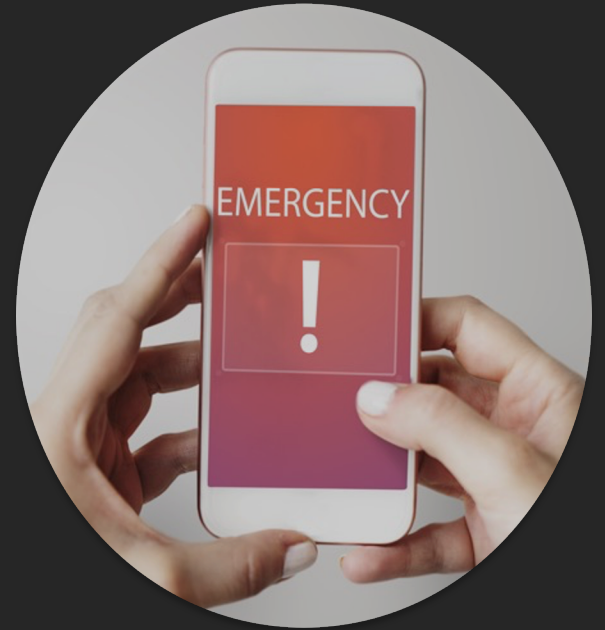
CAUTION!
EXTREME
HEAT
DANGER



Alert & Warning

The collage shows several front pages of The Press Democrat newspaper. The main headline on the right page reads "Survivors say alert system failed them" under the sub-headline "HEAVY SMOKE TRAIL • EMERGENCY WARNING". To its right is another headline "Report contests Trump views" under the sub-headline "CLIMATE CHANGE". Below the main headline is a large photograph of a massive fire with thick orange smoke. Below the photo is a sub-headline "Residents who feel better wonder why their phones were silent". On the left side of the collage, a headline reads "Fraught agenda awaits the Hill". The newspaper's masthead "The Press Democrat" is visible at the top of the right page.

- Assessments
- Alert & Warning Plan
- Active Codes Test: Sept 10/12
- Program – not function
- A&W ≠ EM
- New positions



EM Program



- Commitment
- \$ = Expanded Department
- Staff Development Program = 1%
- COOP
- Emergency Manager  Director

